

# Installationsplan / Installation plan

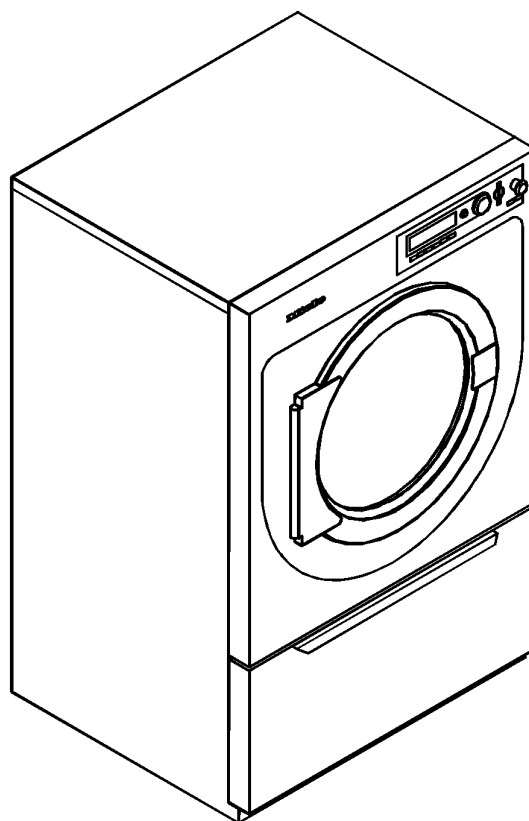
Installatietekening  
Plan d'installation  
Pianta di installazione

Plano de instalación  
Plano de instalação  
Σχέδιο εγκατάστασης

Asennusohje  
Installasjonsplan  
Installationsplan

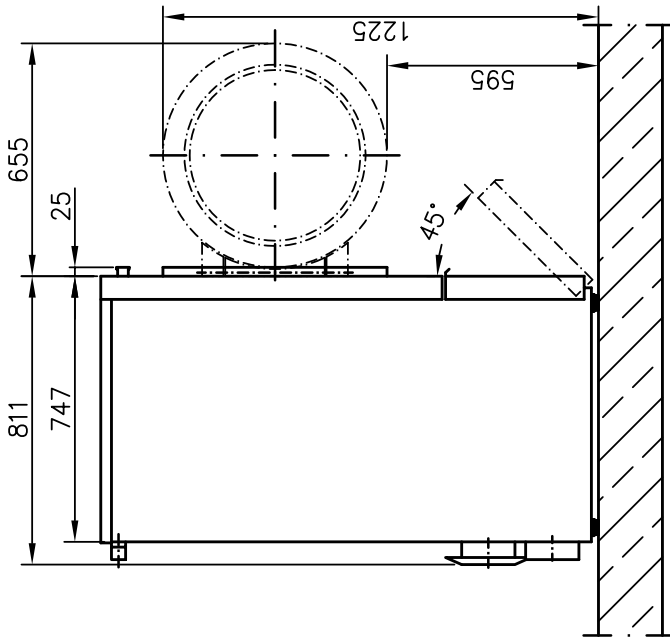
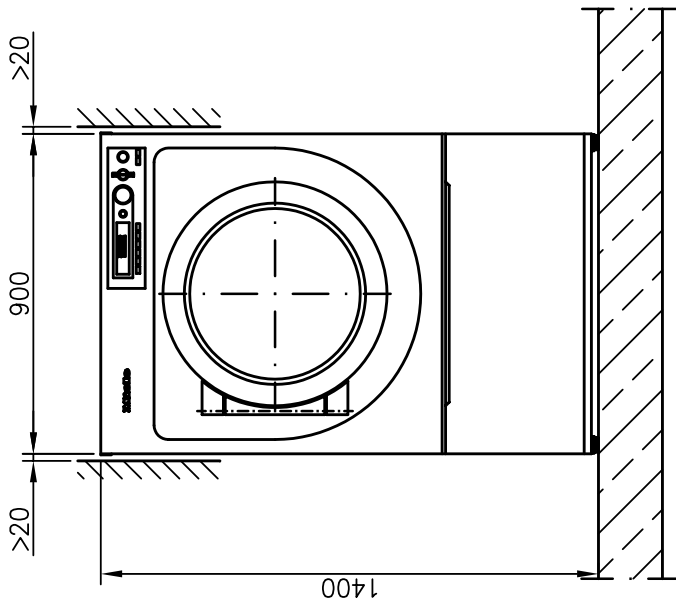


## PT 7251 EL

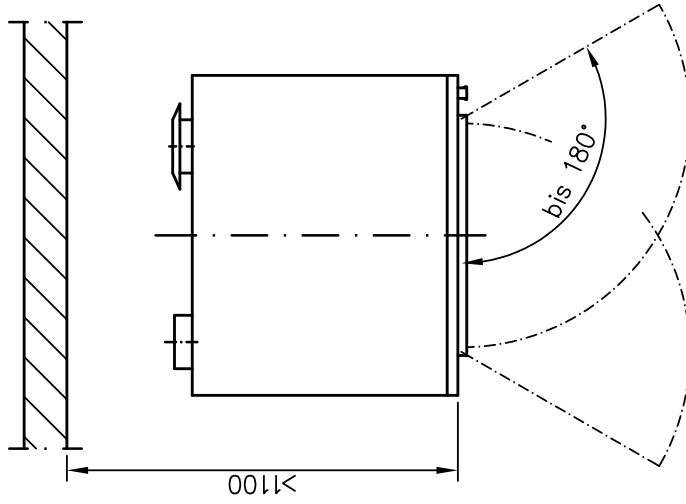


<b>Materialnummer</b>	/	<b>Mat. no.:</b>	<b>06 478 800</b>
<b>Änderungsstand</b>	/	<b>Version:</b>	<b>00</b>
<b>Datum Zeichnung</b>	/	<b>Drawing date:</b>	<b>23.09.2004</b>
<b>Datum Legende</b>	/	<b>Legend date:</b>	<b>23.09.2004</b>

” A ”



” A ”



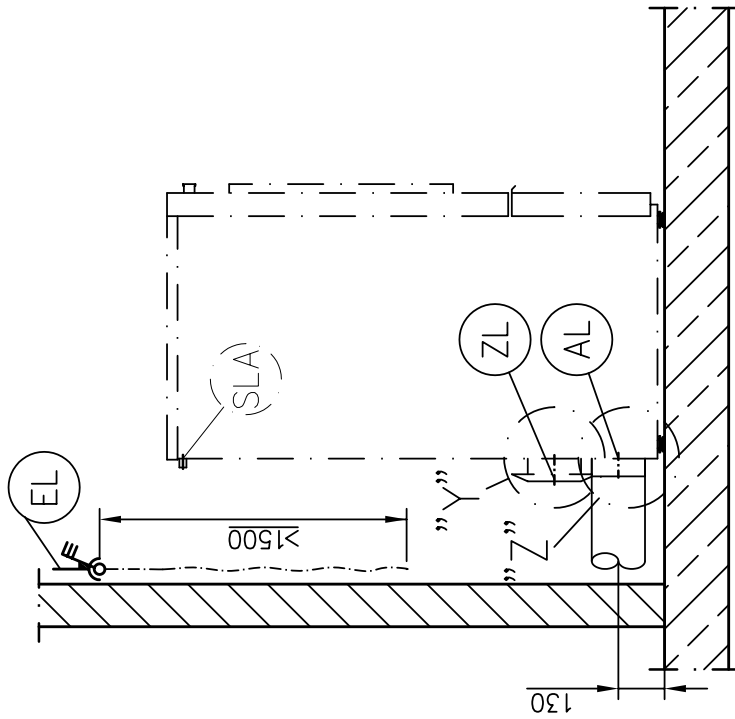
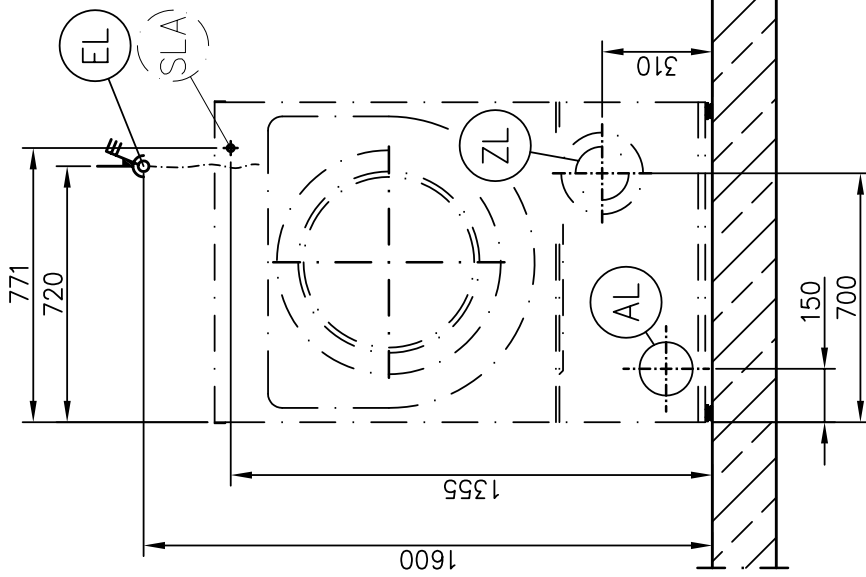
Installationsplan/Installation plan  
Trockner  
PT 7251 EL

Date: 23.09.2004

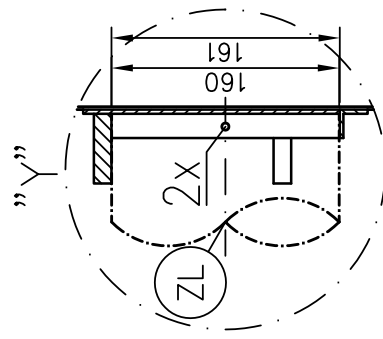
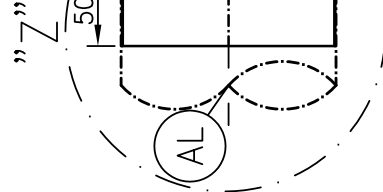
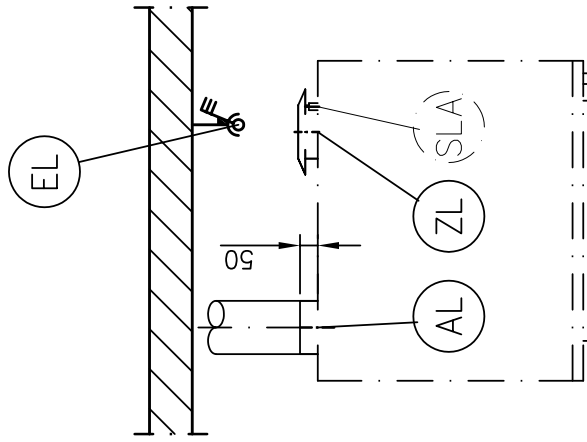
Page: 3

Name: THage

”B”

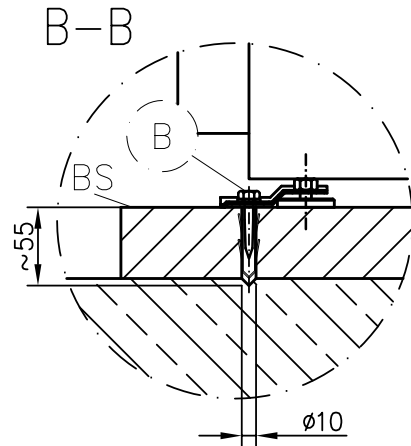
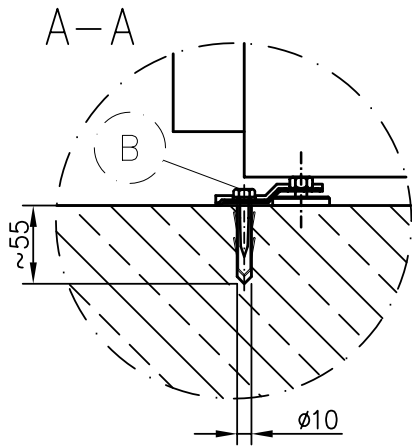
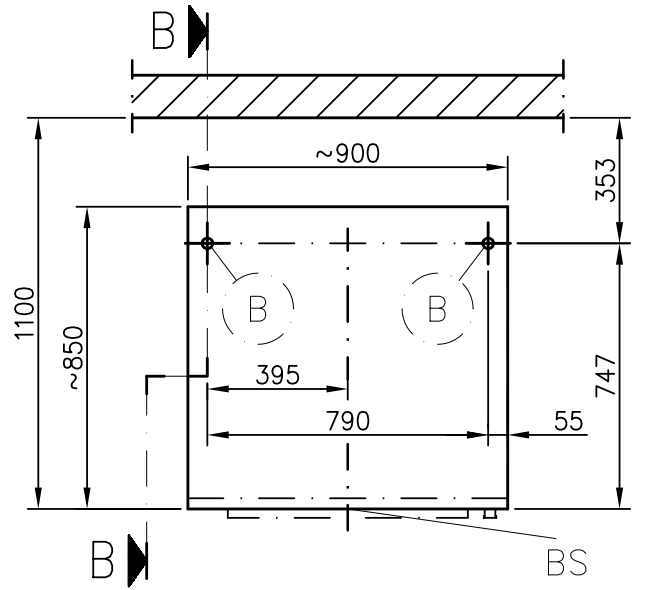
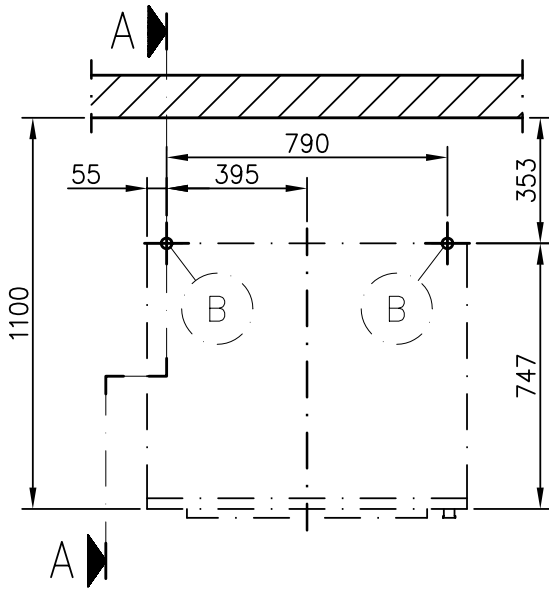
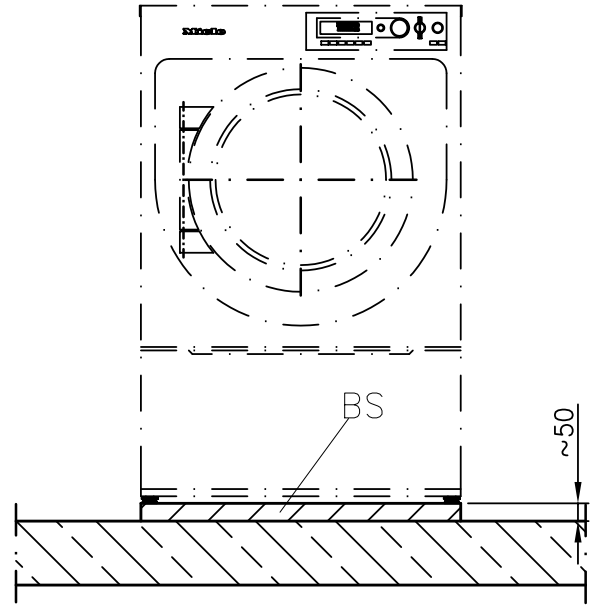
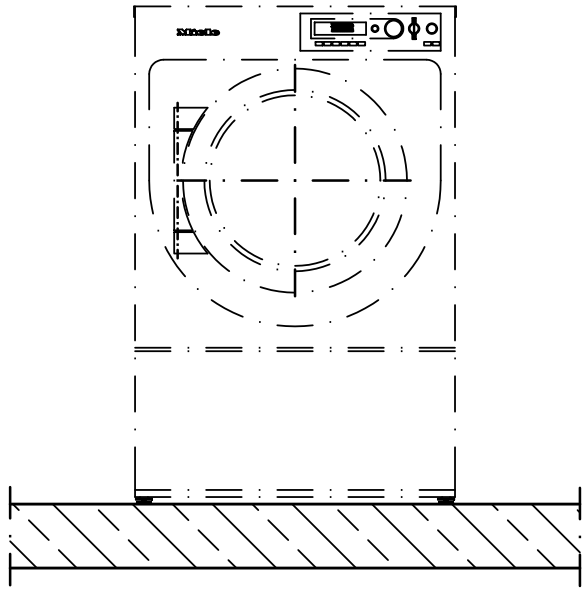


”B”



Installationsplan/Installation plan  
Trackner  
PT 7251 EL

Date: 23.09.2004  
Page: 4  
Name: THage

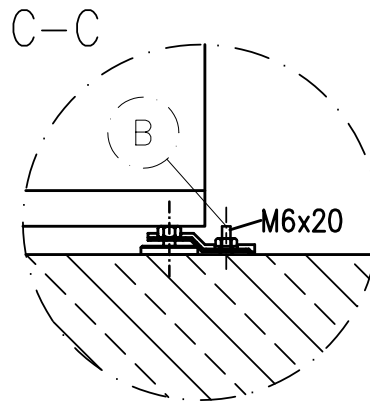
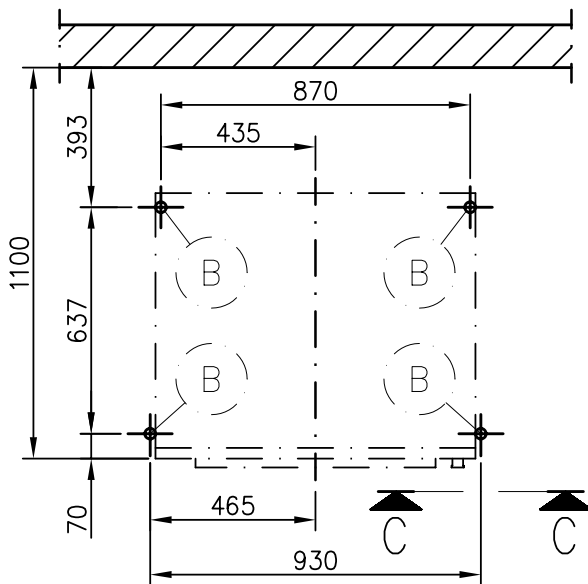
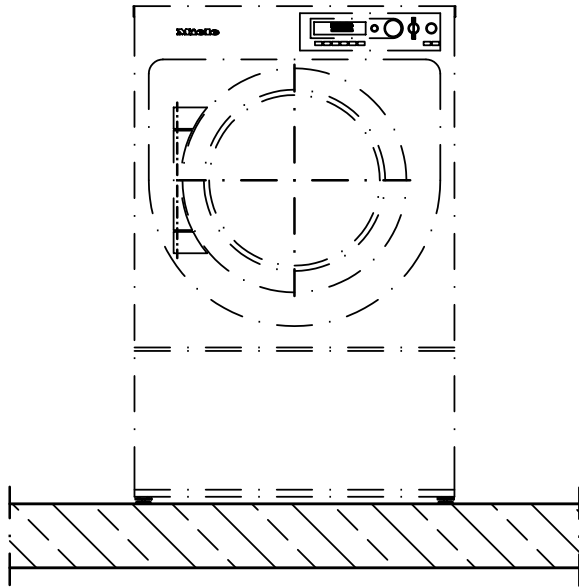


**Miele**  
PROFESSIONAL

Installationsplan/Installation plan  
Trockner  
PT 7251 EL

Date:	23.09.2004
Page:	5
Name:	THage

# Sonderbau / Special Version



	Installationsplan/Installation plan	Date:	23.09.2004
	Trockner	Page:	6
	PT 7251 EL	Name:	THage

## Technical datasheet

**Miele**  
PROFESSIONAL

Tumble dryer:  
Heating:

PT 7251  
Electric (EL)

Legend:



Circled, bold-type abbreviations:  
Connection required



Abbreviations surrounded by broken circle:  
Connection optional or required, depending on model

### Optional extras:

<b>BS</b>	Concrete platform	Concrete plinth (to be provided on-site) optional.		
		Min. concrete quality B15		
		Recommended height	mm	50
		Minimum height	mm	50
		Recommended width	mm	900
Recommended depth	mm	850		
		Ensure good anchorage!		

### Machine connections:

<b>EL</b>	Electrical connection	1. Standard voltage (as supplied) Frequency Rated load Fuse rating Supply lead (H 07 RN-F), min. cross-section with threaded cable connector	V Hz kW A mm <sup>2</sup>	3N AC 380-415 50 (60) 14.2 3 × 25 5 × 4 M 32
		2. Standard voltage (as supplied) Frequency Rated load Fuse rating Supply lead (H 07 RN-F), min. cross-section with threaded cable connector	V Hz kW A mm <sup>2</sup>	3 AC 220-240 50 (60) 14.2 3 × 50 4 × 10 M 40
		3. Standard voltage (as supplied) Frequency Rated load Fuse rating Supply lead (H 07 RN-F), min. cross-section with threaded cable connector	V Hz kW A mm <sup>2</sup>	3 AC 440 50 (60) 14.2 3 × 25 4 × 4 M 32
		Connection using multi-pole wall socket in compliance with IEC 60309 and IEC 60947 is recommended in order to simplify electrical tests. If using a hard-wired connection, install mains isolator according to IEC 60947. Wall socket or mains isolator must be accessible after installation. The use of an earth leakage circuit breaker (ELCB) is strongly recommended. If necessary, equipotential bonding with good galvanic contact must be provided in accordance with all appropriate national and local regulations.		
<b>SLA</b>	Peak load management	Connection cable, min. cross-section Input leads should not be in direct contact with any source of heat. Signal supplied via potential-free (galvanically separated) contact.	mm <sup>2</sup>	3 × 1.5

(AL)	Vented	Nominal air throughput in vented mode Permissible pressure attenuation Machine vent connection ( $d_a \times s \times l$ ) [DN 150] On-site vent connection (interior diameter) Max. temperature	m <sup>3</sup> /h Pa mm mm °C	510 200 150 × 0.6 × 78 150 80
		As relative humidity can be as high as 100%, suitable measures must be taken to prevent a backflow of condensate into the machine.  If the machine fan is unable to transport air over the on-site vent ducting distance, an additional fan with a suitable capacity must be installed either in the ducting or at the point of discharge to atmosphere.		
(ZL)	Air intake	Standard connection: => Air intake from installation site Direct air intake recommended (to prevent draughts)	cm <sup>2</sup>	531
		Sufficient air intake should be available to replace the displaced volume of air.		
		<i>Alternative connection: (cf. Detail Y)</i> => Direct air intake Machine connection ( $d_i \times s \times l$ ) [NW160] On-site connection (external diameter)  <i>Lid removal exposes live components! For safety reasons, the pipe connected for central air intake should be at least 900 mm long and secured using two screws.</i>	mm mm	161 × 4.0 × 16 160
(B)	Fittings (supplied)	2 × screws DIN 571 ( $\varnothing \times$ length) 2 × rawl plugs ( $\varnothing \times$ length) The machine should be bolted to the floor. Fixing materials for floating screed floor to be provided on site	mm mm	6 × 40 10 × 50
	Machine data	Width Depth Height Knocked-down dimensions (W × H) Rear wall gap (measured to front of machine) Net weight Dynamic floor load, max. Average heat dissipation (dependent on ambient room temperature and programme selected) Acoustic power level (re1 pW) Sound pressure level (measured at a distance of 1 m from the machine and at a height of 1.6 m)	mm mm mm mm mm kg N W  dB (A) dB (A)	900 836 1400 900 x 1500 1100 160 1716 500  68 not yet available
Installation should only be carried out by authorised fitters in accordance with valid regulations! Observe installation instructions when installing machine! All rights reserved!				